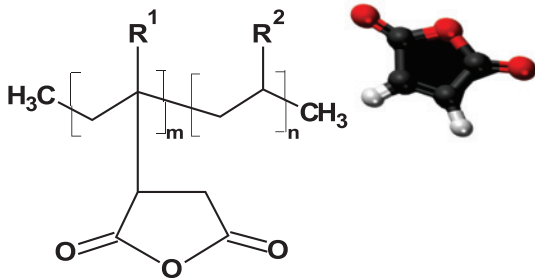


# KARINBOND®

Maleic anhydride grafted polymer, commonly known as LLDPE-g-MAH

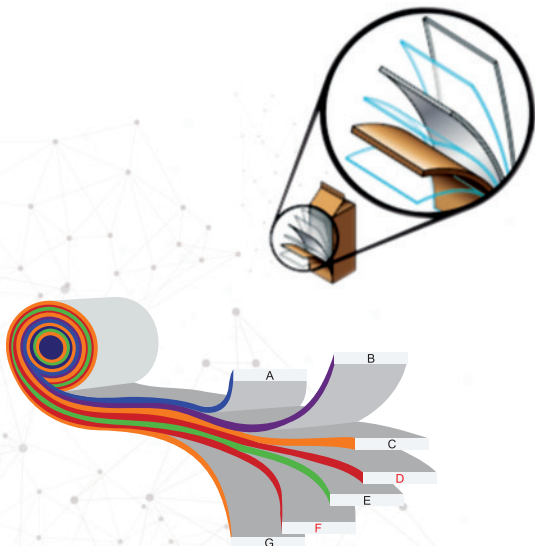
KARINBOND® is a polymer modified with maleic anhydride, with the aim of increasing the polarity between the phases and thus providing an adhesion between a variety of polymers and substrates.



## Application

Used as a polymer compatibilizer to improve the interface and compatibility between the poles and fillers/substrates. Widely used in cables requiring an adhesion between polymer/metal and polymer/fibers.

Also used in bonding layers for multilayer co-extrusion applications, such as films, tubes and other applications.



- ✓ High-tech laboratory
- ✓ Specialized technical department
- ✓ Quality control of finished products
- ✓ Logistics with 24-hour service



[WWW.KARINA.COM.BR](http://WWW.KARINA.COM.BR)